



COMAR MARINE LLC

P.O. Box 1550 • Amelia, Louisiana 70340

25742 Old Hwy 1 • Golden Meadow, Louisiana 70357

(985) 631-2628

comar@comarmarine.com

www.comarmarine.com



65'x 16' CREWBOAT | M/V TENACITY

MAIN PARTICULARS

LENGTH OVERALL	65.0 ft.	19.81 m
BEAM (HULL)	16.0 ft.	4.88 m
DEPTH	8.0 ft.	2.44 m
DRAFT (LIGHT)	3.5 ft.	1.06 m
DRAFT (LOADED)	5.0 ft.	1.52 m

CONSTRUCTION

HULL	ALUMINUM
SUPERSTRUCTURE	ALUMINUM

PERFORMANCE

SPEED	18 KTS.
-------	---------

DECK CARGO

BOARDED DECK LENGTH	19 ft.	5.79 m
BOARDED DECK WIDTH	13 ft.	3.96 m
BOARDED DECK AREA	247 sq.ft.	22.95 m ²
DECK CAPACITY	2.25 LT	2.54 MT

SHIP'S WATER/FUEL

FUEL	900 USG	3.41 m ³
POTABLE WATER	150 USG	0.568 m ³

ACCOMMODATIONS

PASSENGERS	37
CREW	6
BUNKS	(2) CREW (0) PASSENGERS (2) TOTAL
HEADS	1
SHOWER	1
GALLEY SEATING	2
AIR CONDITIONING/HEATING	1

MACHINERY

TOTAL HORSEPOWER	870 HP
MAIN ENGINES	(2) GM 12v71NA @ 435 HP
GEARS	(2) TWIN DISC M514C, RATIO 2.0:1
GENERATORS	(1) ISUZU 13 KW

ELECTRONICS

RADAR	1
GPS/PLOTTER	1
VHF	2
DEPTH RECORDER	1
AIS	1

DOCUMENTATION - CERTIFICATION

YEAR BUILT	1968
BUILDER	BREAUX BAY CRAFT
HULL NUMBER	1001
OFFICIAL #	516982
TONNAGE - GROSS	58
TONNAGE - NET	39
HOME PORT	MORGAN CITY, LA
FLAG	USA
CLASSIFICATION	USCG CERTIFIED, SUBCHAPTER T
ROUTE	EXPOSED

SAFETY

FIRST AID KIT	1
LIFE JACKETS	37
EPIRB	1
FLARE KIT	1
LIFE RINGS	1

CoMar Marine is a privately owned and operated offshore marine transportation company that has been providing our customers with dependable, well-maintained vessels crewed by well-qualified and capable personnel since 1955.

All information provided herein is believed to be true and accurate at the time of printing and can be used to determine if the vessel is applicable to your needs. The Company takes great care to ensure that the information provided is accurate and up to date. The Company does not warranty the accuracy of data and shall not be held liable for any damages that may incur from the use of the information provided herein. A physical inspection of the subject vessel can be carried out to confirm exact specifications.



COMAR MARINE LLC

P.O. Box 1550 • Amelia, Louisiana 70340

25742 Old Hwy 1 • Golden Meadow, Louisiana 70357

(985) 631-2628

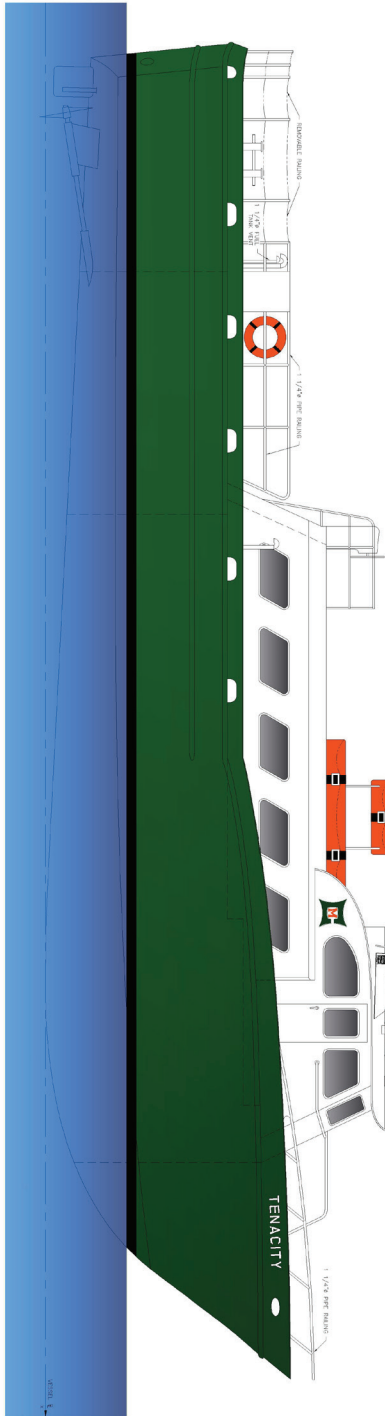
comar@comarmarine.com

www.comarmarine.com

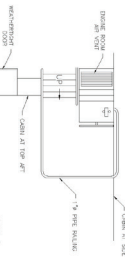


65'x 16' CREWBOAT | M/V TENACITY

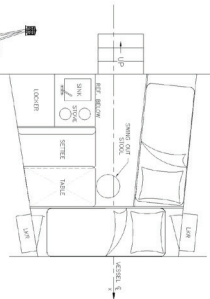
OUTBOARD PROFILE



AFT STEERING STATION PLAN



CREW QUARTERS PLAN



MAIN DECK PLAN



CoMar Marine is a privately owned and operated offshore marine transportation company that has been providing our customers with dependable, well-maintained vessels crewed by well-qualified and capable personnel since 1955.

All information provided herein is believed to be true and accurate at the time of printing and can be used to determine if the vessel is applicable to your needs. The Company takes great care to ensure that the information provided is accurate and up to date. The Company does not warranty the accuracy of data and shall not be held liable for any damages that may incur from the use of the information provided herein. A physical inspection of the subject vessel can be carried out to confirm exact specifications.